

## ProMetall NEW: Patterned metal sheets



ProMetall Mirror façade Dalton

ProMetall

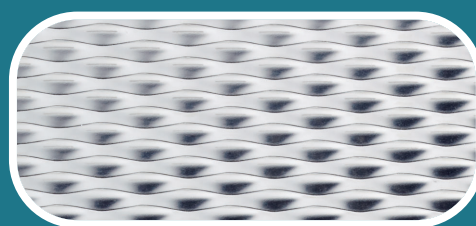
# ProMetall NEW: Patterned metal sheets

## OVERVIEW

- **PATTERNED SURFACES** the classic for industry & architecture

Patterned surfaces undergo a double-sided cold rolling process in stainless steel and other metals, in sheet or strip form. Then the metal sheets are straightened.

*Page 6 - 15*

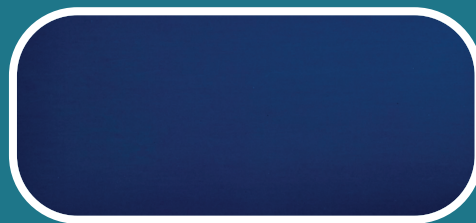


5WL

- **COLOURED SURFACES** Stainless steel coloured, Colourtex®

Whilst painted, powdered and other colour-treated metal surfaces usually appear flat, monotonous and lifeless, ColourTex surfaces create unique colour and light effects.

*Page 16 - 21*

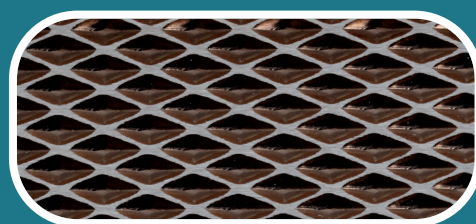


Mirror Blue

- **PATTERNED & COLOURED SURFACES**

ColourTex® surfaces can be combined with the following surfaces: MIRROR or Satin, GRANEX™, patterned, and other surfaces.

*Page 22 - 27*



Pyramid Bronze

- **BLASTED SURFACES** Granex

At ProMetall, the GRANEX™ surfaces are thoroughly blasted with various media of varying degrees of roughness, in sheet or strip form.

*Page 28 - 31*



Granex Champagne

# ProMetall NEW: Patterned metal sheets

## Warehouse/supplier/ production programme

### ● WAREHOUSE PROGRAMME:

- over 80 positions available at short notice
- see stock list
- Austria's largest warehouse for patterned metal sheets!

### ● SUPPLIER PROGRAMME:

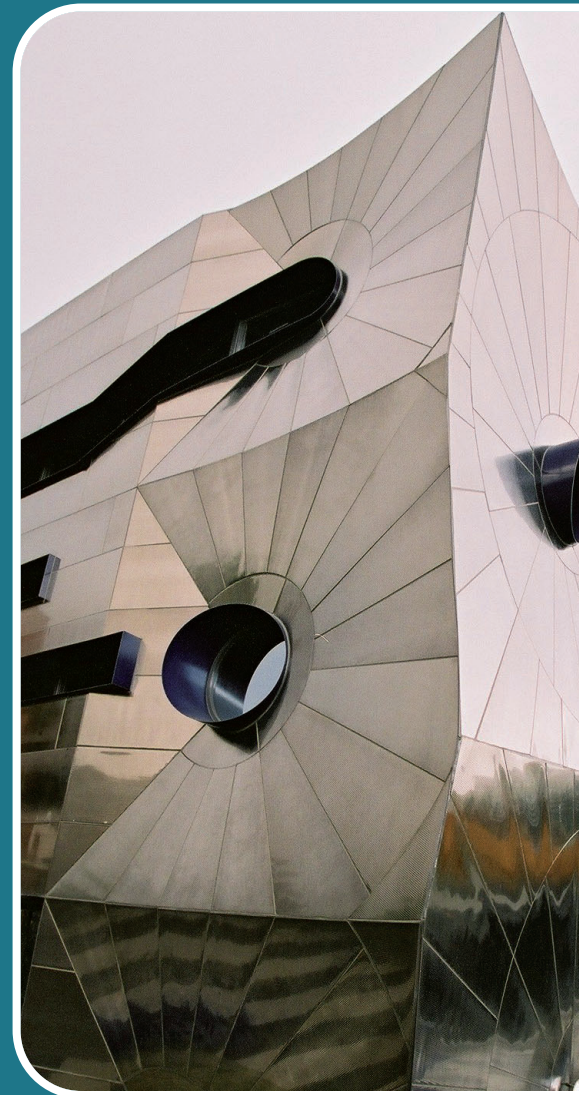
- see stock list from works warehouse
- from ongoing serial production!
- flexible special patterns / colours from one unit

### ● PRODUCTION PROGRAMME:

- **Material thickness:** from 0.1 to 3.0 mm, above upon request
- **Widths:** 1000 - 1500 mm
- **Lengths:** 2000, 2500 + 3000 mm (standard) above upon request
- **Supplier deadlines:** from 1 week, or by agreement

### ● FURTHER PROCESSING:

- Cutting by means of state-of-the-art guillotine cutters
- Laser cutting, fine-beam plasma cutting, water-jet cutting
- Edging, bending, rounding
- Welding (all processes)



# PATTERNED SURFACES

## WAREHOUSE / SUPPLIER / PRODUCTION PROGRAMME

PATTERNED METAL SHEETS							
Type Description	Material / Surface (1s film- wrapped)	Sheet thickness mm	Plate width mm	Plate length mm	Weight kg / plate	Supply period from stock subject to availability	Available for delivery from factory stock subject to availability
CHECKER							
CHECKER	1,4301 / 2R	0.8	1250	2500	20.0		x
CHECKER		1.0	1250	2500	25.0		x
CHECKER		1.25	1250	2500	31.3		x
CHECKER		1.5	1250	2500	37.5		x
CHECKER		2.0	1250	2500	50.0		x
CHECKER	1,4301 / 2R	0.8	1250	2500	20.4		x
CHECKER	1,4301 / 2R	0.8	1500	3000	28.8		x
CHECKER		1.0	1500	3000	36.0		x
CHECKER		1.25	1500	3000	45.0		x
CHECKER		1.5	1500	3000	54.0		x
LINEN							
LINEN	1,4301 / 2R	0.8	1250	2500	20.0		x
LINEN		1.0	1250	2500	25.0		x
LINEN		1.25	1250	2500	31.3		x
LINEN		1.5	1250	2500	37.5		x
LINEN		2.0	1250	2500	50.0		x
LINEN	1,4301 / 2R	0.8	1500	3000	28.8		x
LINEN		1.0	1500	3000	36.0		x
LINEN		1.5	1500	3000	54.0		x
5WL							
5WL	1,4301 / geb.	0.8	1250	2500	20.0		x
5WL		1.0	1250	2500	25.0		x
5WL		1.25	1250	2500	31.25		x
5WL		1.5	1250	2500	37.5		x
5WL		2.0	1250	2500	50.0		x
5WL	1,4301 / geb.	0.8	1250	3000	24.0		x
5WL		1.0	1250	3000	30.0		x
5WL		1.25	1250	3000	37.5		x
5WL		1.5	1250	3000	45.0		x
5WL	1,4301 / geb.	0.8	1000	2000	12.8		x
5WL		1.0	1000	2000	16.0		x
5WL		1.25	1000	2000	20.0		x
5WL		1.5	1000	2000	24.0		x
5WL		2.0	1000	2000	32.0		x
7GM							
7GM	1,4301 / 2R	1.0	1000	2000	16.0		x
7GM		1.5	1000	2000	24.0		x
7GM		2.0	1000	2000	32.0		x
7GM	1,4301 / 2R	1.5	1000	2500	30.0		x
7GM		1.0	1000	3000	24.0		x
7GM		1.0	1250	2500	25.0		x
7GM		1.5	1250	2500	35.7		x
7GM		1.0	1500	3000	36		x
7GM		1.5	1500	3000	54		x
7GM							



# PATTERNED SURFACES

## WAREHOUSE / SUPPLIER / PRODUCTION PROGRAMME

PATTERNED METAL SHEETS							
Type Description	Material / Surface (1s film-wrapped)	Sheet thickness mm	Plate width mm	Plate length mm	Weight kg / plate	Supply period from stock subject to availability	Available for delivery from factory stock subject to availability
RHOMBUS							
RHOMBUS	1,4301 / 2R	0.8	1250	2500	20.0		x
RHOMBUS		1.0	1250	2500	25.0		x
RHOMBUS		1.25	1250	2500	31.3		x
RHOMBUS		1.5	1250	2500	37.5		x
RHOMBUS		2.0	1250	2500	50.0		x
RHOMBUS	1,4301 / 2R	0.8	1500	3000	28.8		x
RHOMBUS		1.0	1500	3000	36.0		x
RHOMBUS		1.5	1500	3000	54.0		x
MIRROR SUPER 8							
SUPER 8	1,4301	0.8	1000	2000	12.8		x
SUPER 8		1.0	1000	2000	16.0		x
SUPER 8		1.25	1000	2000	20.0		x
SUPER 8		1.5	1000	2000	24.0		x
SUPER 8		2.0	1000	2000	32.0		x
SUPER 8	1,4301	0.8	1250	2500	20.0		x
SUPER 8		1.0	1250	2500	25.0		x
SUPER 8		1.25	1250	2500	31.25		x
SUPER 8		1.5	1250	2500	37.5		x
SUPER 8		2.0	1250	2500	50.0		x
SUPER 8	1,4301	1.0	1250	3000	30.0		x
SUPER 8	1,4301	0.8	1500	3000	24.0		x
SUPER 8		1.0	1500	3000	30.0		x
SUPER 8		1.5	1500	3000	54.0		x
SUPER 8		2.0	1500	3000	72.0		x
SUPER 8		3.0	1500	3000	108.0		x
6WL							
6WL	1,4301 / 2R	1.5	1000	2000	2.0		x
6WL		0.8	1250	2500	20.0		x
6WL		1.0	1250	2500	25.0		x
6WL		1.25	1250	2500	31.25		x
6WL		1.5	1250	2500	37.5		x
6WL		2.0	1250	2500	50.0		x
6WL		1.0	1500	3000	30.0		x
6WL		1.5	1500	3000	54.0		x
LEATHER							
LEATHER	1,4301 / 2R	0.8	1250	2500	20.0		x
LEATHER		1.0	1250	2500	25.0		x
LEATHER		1.25	1250	2500	31.25		x
LEATHER		1.5	1250	2500	37.5		x
LEATHER		2.0	1250	2500	50.0		x
LEATHER	1,4301 / 2R	0.8	1500	3000	28.8		x
LEATHER		1.0	1500	3000	36.0		x
LEATHER		1.25	1500	3000	45.0		x
LEATHER		1.5	1500	3000	54.0		x
CANVAS							
CANVAS	1,4301 / 2R	0.8	1250	2500	20.0		x
CANVAS		1.5	1250	2500	37.5		x
CAMBRIDGE							
CAMBRIDGE	1,4301 / 2R	0.8	1250	2500	20.0		x
CAMBRIDGE		1.5	1250	2500	37.5		x

# PATTERNED SURFACES

## THE CLASSIC FOR INDUSTRY & ARCHITECTURE

### Advantages:

#### ● VISUAL SIGNIFICANCE

The patterned surfaces offer a wide range of different design structures conveying a visually sophisticated and modern image.



#### ● ROBUSTNESS

The special cold rolling technique increases the metal sheets' mechanic strength and makes them resistant to denting and scratching - unlike smooth metal sheets. They don't get dirty easily and are difficult to mark or label. Inspected and proven thousands of times for over 40 years. The perfect material to stem the increasing tide of vandalism.

#### ● DURABILITY

Extreme durability, combined with a high degree of functionality and extremely low maintenance costs are a huge long and medium-term plus in every calculation, for lifts, facades, doors, column cladding and many other applications.



# PATTERNED SURFACES

## THE CLASSIC FOR INDUSTRY & ARCHITECTURE



### ● PROMOTES SLIDING

Patterned surfaces offer less frictional resistance and thus increase the production process. For many sectors such as the food, paper and packaging industry, they are the perfect medium to transport goods and their packaging.

### ● HEAT INSULATION AND MANAGEMENT

Leading manufacturers process patterned surfaces for heat insulation and management purposes.

### ● WEIGHT REDUCTION

As a consequence of double-sided rolling, the resulting material features a significantly higher degree of torsional and flexural rigidity than smooth metal sheets. The material does not need to be as thick and you can save weight and money.

### ● LIGHT REFLECTION

Patterned surfaces are a huge success in the lighting industry to improve reflection and prevent undesired light irritations.



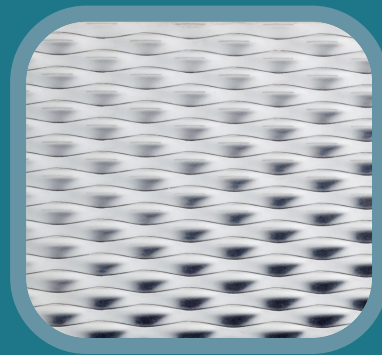
# PATTERNED SURFACES

## RANGE

Patterned surfaces undergo a double-sided cold rolling process in stainless steel and other metals, in sheet or strip form. Then the metal sheets are straightened.



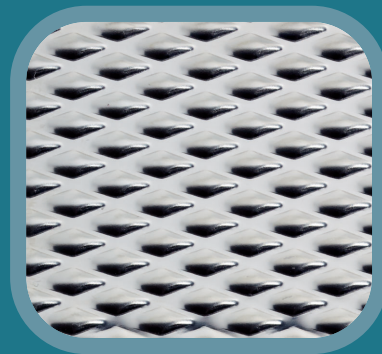
2 WL



5 WL



6 WL



7 GM®



9 EH



# PATTERNED SURFACES

## RANGE



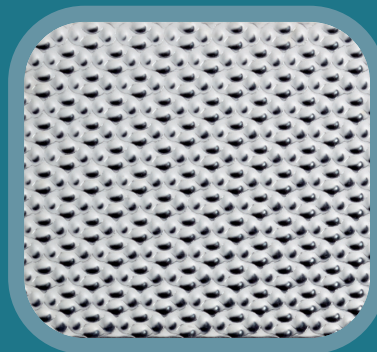
10 WG



11 PS



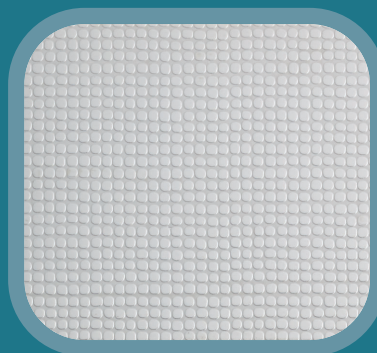
LEATHER



13 SD



CAMBRIDGE



CANVAS

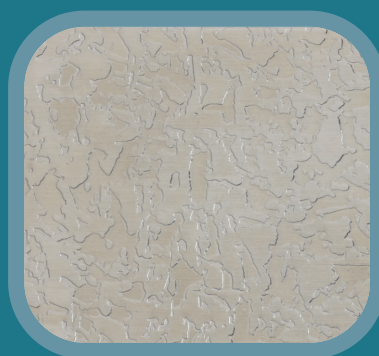
# PATTERNED SURFACES

## RANGE

Patterned surfaces undergo a double-sided cold rolling process in stainless steel and other metals, in sheet or strip form. Then the metal sheets are straightened.



**CHECKS**



**ICE FLOWER**



**LEINEN**



**RHOMBUS**



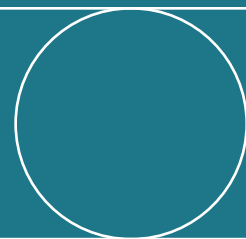
**CHECKER**



**TREADTEX®**

# PATTERNED SURFACES

## SUPPLIER OPTIONS



**Materials:** 1,4016, 1,4301, 1,4401, 1,4404, 1,4571 and other qualities upon request. Aluminium: Quality categories 1000, 3000, 5000, and other qualities upon request. Brass, bronze, copper, black steel, galvanised steel, titanium, other materials upon request.

**Surfaces stainless steel:** 2B, 2R, glass bead blasted (see GRANEX™ surfaces), coloured (see ColourTex® surfaces), sanded, brushed and other special surfaces (see other surfaces). Aluminium: Surfaces, satin-finished, brushed.

**Lengths:** 2000 mm, 2500 mm and 3000 mm  
Other lengths upon request.

**Widths:** 1000 mm and 1250 mm, to some extent surface-dependent (see specifications sample). Other widths upon request  
\*Please note max. rollable thickness and width, in particular, for pattern 7GM®.



Ramada Hotel, Solothurn, CH, 6 WL Satin

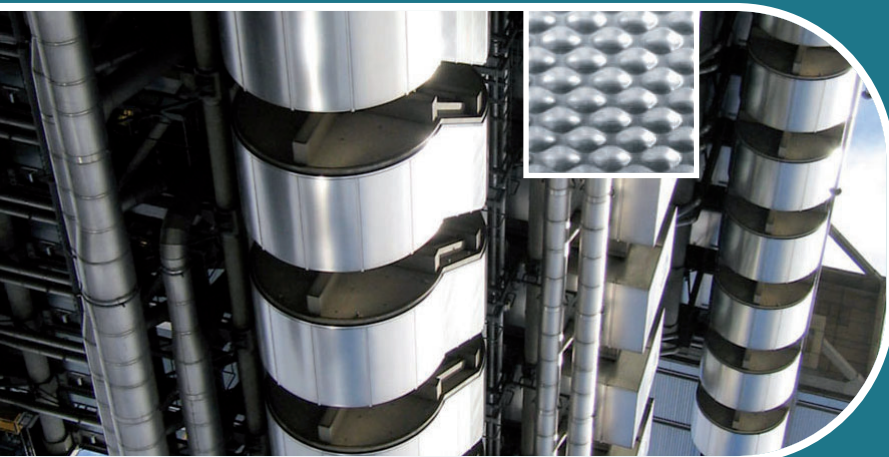


# PATTERNED SURFACES

## REFERENCES



Millenium Center, Cardiff, GB, 6 WL

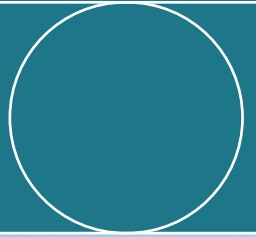


Print Media Academy, Heidelberg, DL, 6WL and Linen



Hilton Hotel, Shanghai, 2WL





Columbia Twins, Hamburg, D, 6 WL





# PATTERNED SURFACES

## REFERENCES



Sprungschanze (Ski Jump) Bergisel



Columbia Twins, Hamburg, D



Raika, Vienna





Hotel Astoria, Lucerne



Metropolitan University, London

# COLOURED SURFACES

## STAINLESS STEEL COLOURED, COLOURTEX

### ● STAINLESS STEEL COLOURED

ColourTex surfaces can be combined with the following surfaces: MIRROR or Satin, GRANEX™, patterned, and other surfaces. ColourTex® can be produced on the basis of stainless steel and in plate form only. The following colours are available: Black, blue, bronze, champagne, anthracite, gold, green and red.



### ● FASCINATING COLOUR EFFECTS

Whilst painted, powdered and other colour-treated metal surfaces usually appear flat, monotonous and lifeless, ColourTex® surfaces create unique colour and light effects. Object and product receive a lively, innovative skin that always presents itself in different lights, is attractive to its observers both in architecture and industry, and is admired over and over again.

### ● COLOUR FASTNESS

ColourTex® surfaces are colour-fast, weather-resistant, UV-resistant, food-safe and suitable for cleanroom up to 200°C.

### ● PROTECTION AGAINST CORROSION

The ColourTex® procedure generates the colour of stainless steel by increasing the oxide layer. This increases the corrosion resistance. Even after decades, the surfaces will still impress with their outdoor brilliance and durability.

### ● ADVERTISING SIGNS ETC.

ColourTex® surfaces are perfect for outdoor and indoor advertising, e.g. as advertising signs, billboards, trade fair construction and much more. The colours are vibrant and attract attention, at the same time they are durable and do not change.



# COLOURED SURFACES

## RANGE



**MIRROR Black**



**MIRROR Blue**



**MIRROR Red**



**MIRROR Gold**



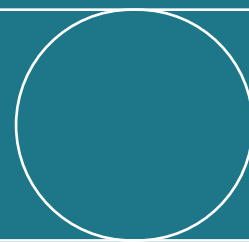
**MIRROR Super 8**



**MIRROR Green**

# COLOURED SURFACES

## RANGE



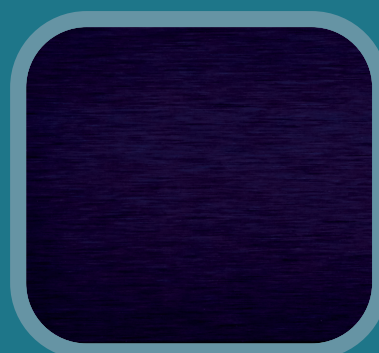
**SPIEGEL Champagne**



**SPIEGEL Bronze**



**SATIN Gold**



**SATIN Electro Purple**

# COLOURED SURFACES

## RANGE



**SATIN Electro Gold**



**SATIN Black**



**SATIN Charcoal**



**SATIN Electro-Blue**



**SATIN Electro-Bronze**

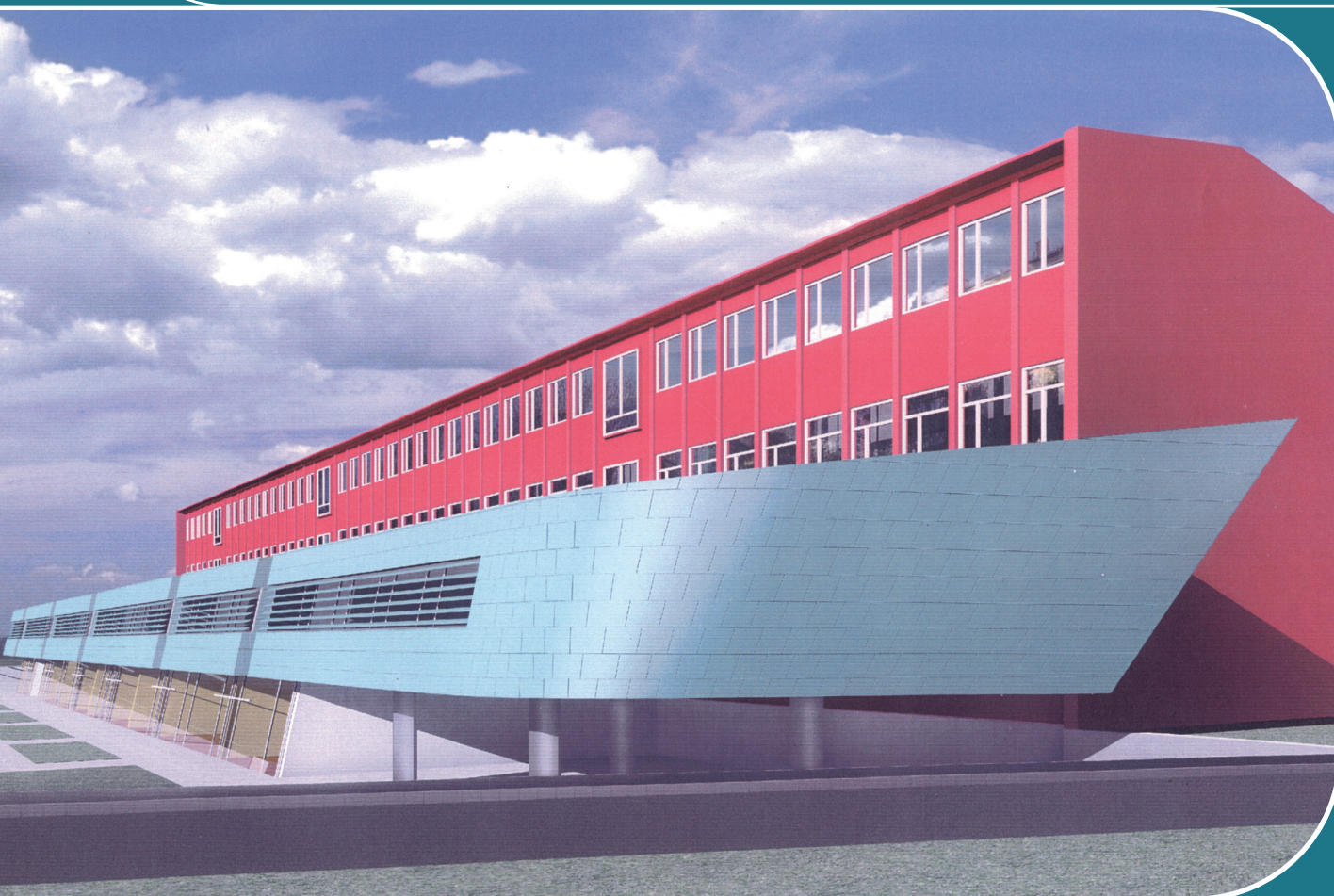


**SATIN Electro-Champagne**



# COLOURED SURFACES

## REFERENCES



Schrödinger School, Graz



Schrödinger School, Graz



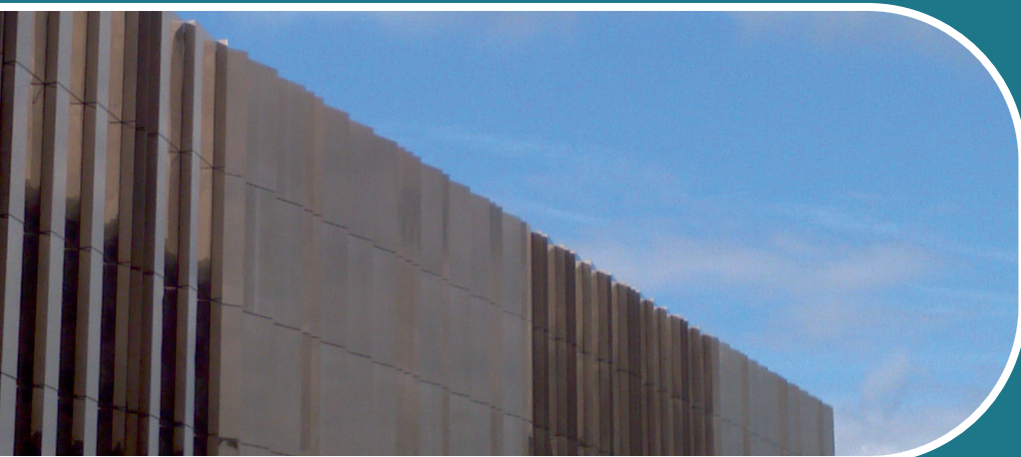


# COLOURED SURFACES

## REFERENCES



Contemporary Jewish Museum, San Francisco, USA



Leeds University Archive, Leeds, GB, Mirror Bronze



Neimann Marcus Shopping Centre, Cambridge, USA



# PATTERNED + COLOURED SURFACES

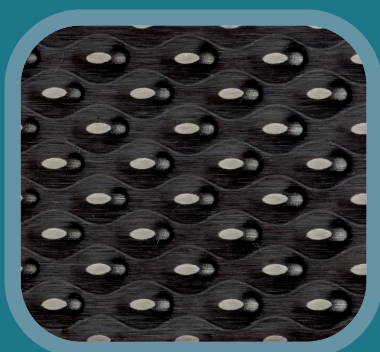
## RANGE



**9EH SATIN Electro-Bronze**



**LINEN Bronze**



**PAGODA**



**PALADIN**

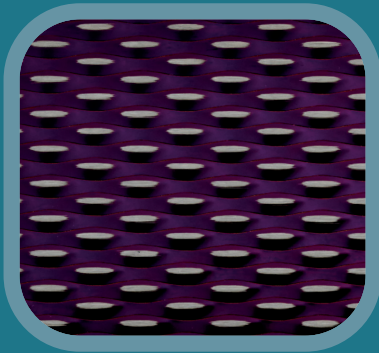


**PEARL Green**

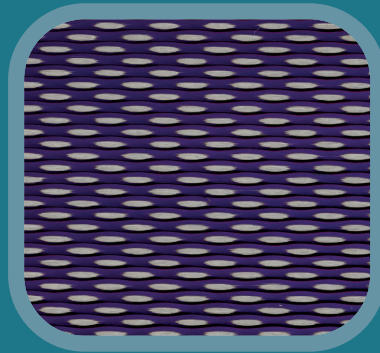


**PINSTRIP**

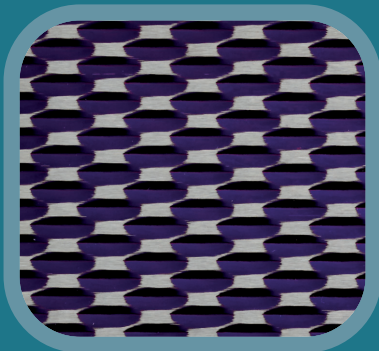
# PATTERNED + COLOURED SURFACES RANGE



PIPPIN



POPPY



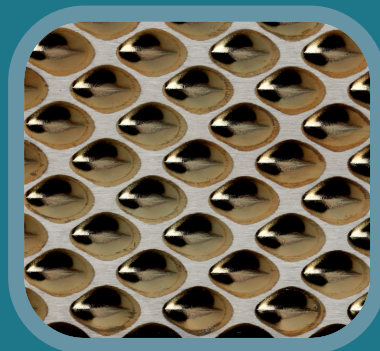
PRISM



PYRAMID



CHECKERS Gold



PEARL Gold



# PATTERNED + COLOURED SURFACES

## RANGE



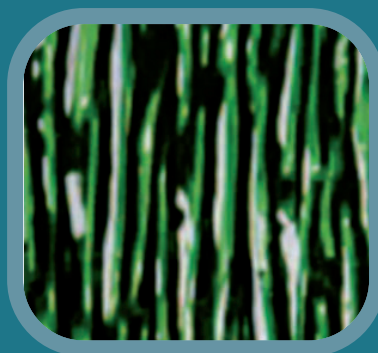
12 LG Black



PAMPAS Blue



QUILTED

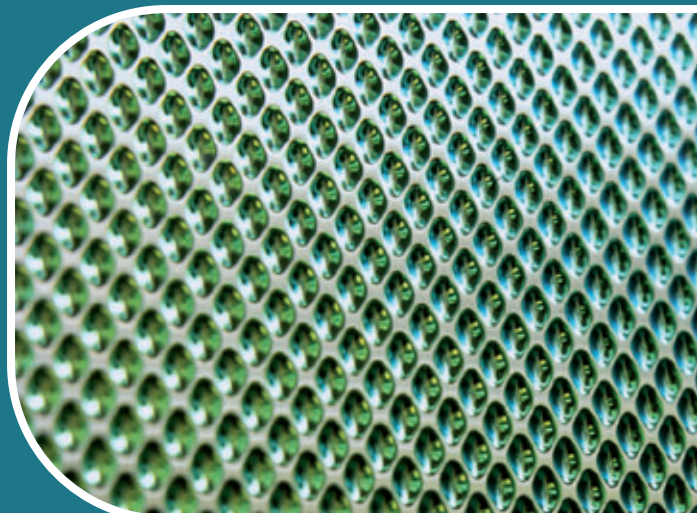


PEGASUS Green

Centro Comercial Espacio, León, Spain



Britomart, Auckland, NZ



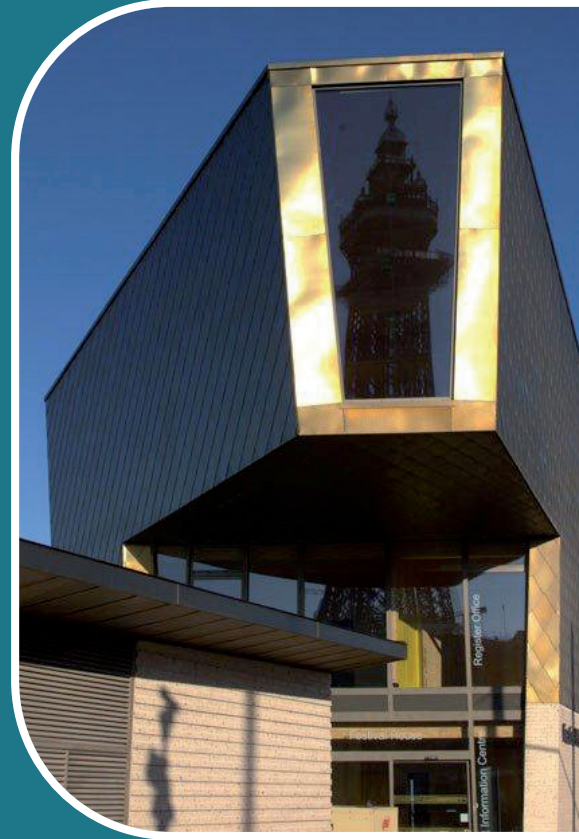


# PATTERNED + COLOURED SURFACES

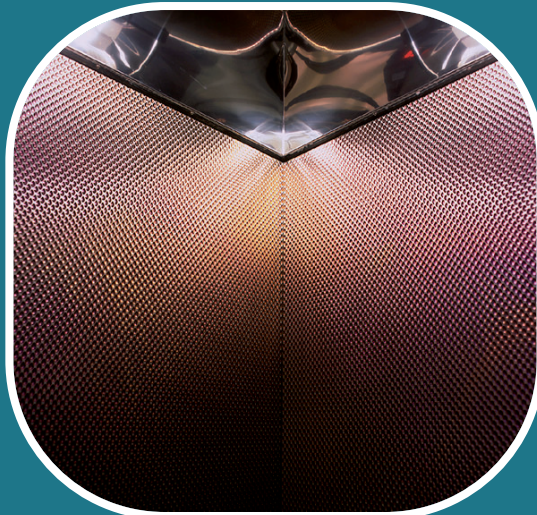
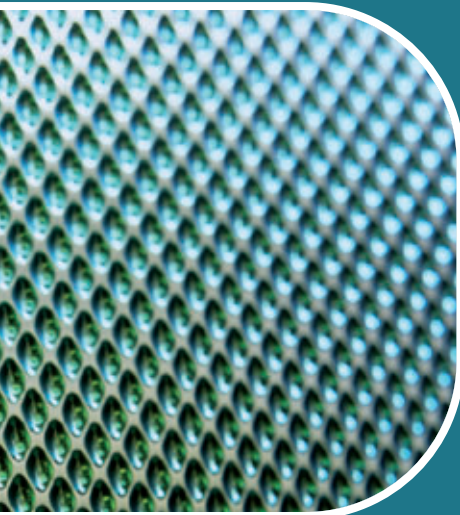
## REFERENCES



Britomart, Auckland, NZ



Headland Tower, Greatland, GB



Headland Tower, Greatland, GB



# PATTERNED + COLOURED SURFACES

## SUPPLIER OPTIONS

**Lengths**

2000 mm, 2500 mm and 3000 mm, max.  
length: 3100 mm

**Widths**

1000 mm and 1250 mm, to an extent  
surface-dependent (see specifications  
sample), other widths upon request.

For production reasons, an approx. 20 mm  
wide strip may form on a long side of the  
plates, this strip is not coloured and  
includes, in any case, 3-4 boreholes  
(approx. 5 mm diameter).

Please check the possible thickness and  
width of the respective products e.g.  
PYRAMID ColourTex® prior to tendering  
or order.

Please note max. rollable thickness and  
width, in particular, for pattern 7GM®.

**Materials**

Stainless steel: 1,4016 (limited), 1,4301,  
1,4401, 1,4404

**Surface finishes**

MIRROR, SATIN, BLASTED, PATTERNED  
and combined.



KWZ, Göttingen, DL

# PATTERNED + COLOURED SURFACES

## REFERENCES



Brand Loyalty, Endhoven, NL



Dickinson College, USA Carlisle



# BLASTED SURFACES

## GRANEX™

## Advantages:

At ProMetall, the GRANEX™ surfaces are thoroughly blasted with various media of varying degrees of roughness, in sheet or strip form. Most steel firms process parts and smaller areas in limited surface quality.

ProMetall, on the other hand, produces perfect, top-range surface quality on the basis of top-quality raw materials, with state-of-the-art technology and decades of experience. These surfaces are designed to meet the strictest requirements for architectural application.

### ● VISUAL APPEARANCE

GRANEX™ surfaces appear velvety, matt and are the perfect raw material for top-range applications in architecture and design. This surface is produced according to strictest quality specifications. It is also without direction and benefits from low reflection.

### ● REFLECTION

GRANEX™ can be produced in various degrees of roughness and the resulting degrees of reflection.

### ● CONFORMITY OF THE SURFACE

It takes a lot of experience in selecting suitable raw material quality and its processing to ensure constantly good quality of finish. If these criteria are ignored, qualitative defects in the surface occur immediately; this has a negative impact, especially in architectural projects.

### ● SELECTION OF RAW MATERIALS

ProMetall, however, has produced constantly perfect surface quality since 1959, designed for the strict requirements of architecture and design, on the basis of top-range raw

materials, with state-of-the-art technology and experience.



## SUPPLIER OPTIONS

### Materials

Stainless steel: 1,4016, 1,4301, 1,4401, 1,4404.  
Other metals upon request.

### Surfaces

Stainless steel: 2B, 2R, patterned surfaces, coloured (see ColourTex® surfaces).

### Lengths

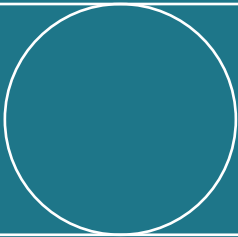
2000 mm, 2500 mm and 3000 mm.  
Other lengths upon request.

### Widths

1000 mm and 1250 mm. (1500 mm for uncoloured GRANEX surfaces)  
Other widths upon request.

# BLASTED SURFACES

RANGE



GRANEX™ Bronze



GRANEX™ C1A



GRANEX™ Black



GRANEX™ Blue



GRANEX™ M1A

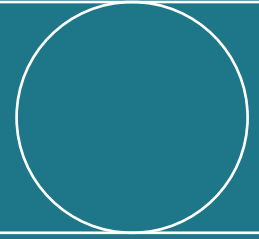


GRANEX™ Purple

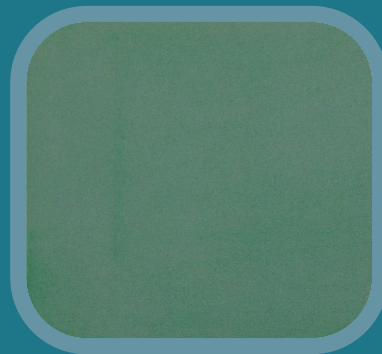


# BLASTED SURFACES

## RANGE



GRANEX™ Gold



GRANEX™ Green



GRANEX™ Red



GRANEX™ Champagne

## BLASTED SURFACES REFERENCES



University of California San Diego,  
La Jolla, USA, Granex Green ColourTex



Ideal for furniture, Granex™ M1A



Cancom HQ, Jettingen, D, Granex Black ColourTex



Crystall Mall, Las Vegas,  
USA, Granex M1A



# PATTERNED METAL SHEETS

## APPLICATION EXAMPLES

Façades:





# PATTERNED METAL SHEETS

## APPLICATION EXAMPLES

Façades, sculptures:





# PATTERNED METAL SHEETS

## APPLICATION EXAMPLES

Handrails for balconies, interior fittings:

