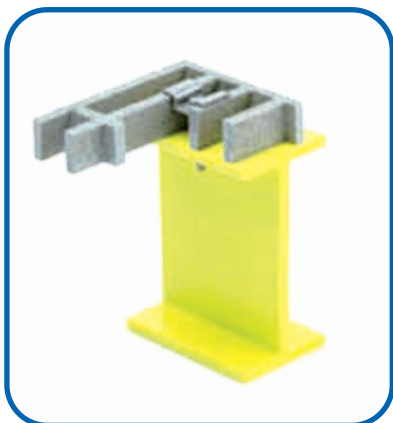


Stainless steel mountings

Installation and mounting takes place with stainless steel accessories AISI 316 only. According to special requirements, ProMetall supplies clips in various formats and sizes according to special requirements.

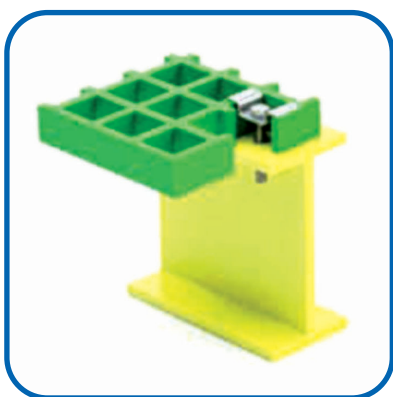


CLIPS TYPE D30/7 AND D30/9

D30/7 - D30/9

TECHNICAL TABLE

Description:	Connection clips made of stainless steel AISI 316 complete with bolt and weld nuts. Screws in accordance with the table. The connection clips are used to combine the two attached plates.
For use with the following gratings:	SCH 30/28 SCH 50/28 SCH 30/38 SCH 50/38

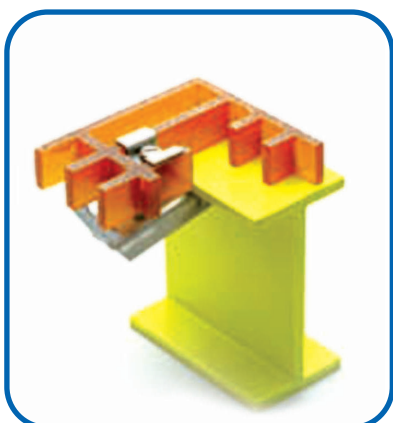


CLIPS TYPE D40/7 AND D40/9

D40/7 - D40/9

TECHNICAL TABLE

Description:	Connection clips made of stainless steel AISI 316 complete with bolt and weld nuts. Screws in accordance with the table. The connection clips are used to combine the two attached plates.
For use with the following gratings:	SCH 40/28 SCH 38/25 SCH 38/38 SCH 40/38 SCH 38/30

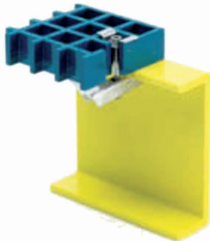


CLIPS TYPE DS 30/9

DS30/9

TECHNICAL TABLE

Description:	Connection clips made of stainless steel AISI 316 complete with bolt and weld nuts. Screws in accordance with the table. The connection clips are used to combine the two attached plates.
For use with the following gratings:	SCH 30/28 SCH 50/28 SCH 30/38 SCH 50/38



CLIPS TYPE DS40/9

DS40/9

TECHNICAL TABLE

Description: Connection clips made of stainless steel AISI 316 complete with bolt and weld nuts. Screws in accordance with the table. The connection clips are used to combine the two attached plates.

For use with the following gratings:

- SCH 40/28
- SCH 38/25
- SCH 38/38
- SCH 40/38
- SCH 38/30



CLIPS TYPE 19T7 AND 19T9

9T7 - 19T9

TECHNICAL TABLE

Description: Connection clips made of stainless steel AISI 316 complete with bolt and weld nuts. Screws in accordance with the table. The connection clips are used to combine the two attached plates.

For use with the following gratings:

suitable for all gratings with
Mesh width mm 19 x 19, thickness mm 30, 40 and 52.

- SCH 50/30
- SCH 50/40
- SCH 52/52



CLIPS TYPE T7 AND T9

T7 - T9

TECHNICAL TABLE

Description: Connection clips made of stainless steel AISI 316 complete with bolt and weld nuts. Screws in accordance with the table. The connection clips are used to combine the two attached plates.

For use with the following gratings:

suitable for all types of gratings, in particular, those with closed surface, excl. micro mesh.



CLIPS TYPE TS9

TS9

TECHNICAL TABLE

Description: Connection clips made of stainless steel AISI 316 complete with bolt and weld nuts. Screws in accordance with the table. The connection clips are used to combine the two attached plates.

For use with the following gratings:

for use with all open and closed gratings, excl. micro mesh